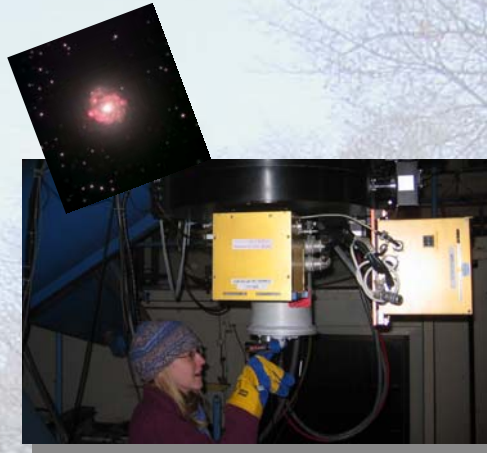


W
O
M
E
N

i
n

S
C
I
E
N
C
E

Astronomy Department



The department has a well developed outreach program. Graduate students run weekly open houses at Kirkwood Observatory located on the Bloomington campus and give tours to school programs.

IU graduate students in astronomy are encouraged to observe at the WIYN 3.5-m and 0.9-m telescopes at Kitt Peak. In addition to these premier facilities, the Department operates 16" and 50" robotic telescopes in the nearby Morgan-Monroe State Forest, as well as three teaching and outreach telescopes on the Bloomington campus.



Our undergraduate curriculum stresses the integration of research into the classroom. Many of our student also participate in research projects within the department and through NSF funded REU programs during the summer.

Meet all the IU Astronomy Faculty at www.astro.indiana.edu

Indiana University
727 East 3rd Street
Swain West 319
Bloomington, IN 47405

Phone: 812-855-6911
Fax: 812-855-8725
Email: astdept@indiana.edu

The Indiana University Astronomy Department receives high marks for its friendly and supportive atmosphere for students. Since five of nine faculty members in astronomy are women, students can expect to join a strong network of women in science.



DEPARTMENT OF ASTRONOMY

INDIANA UNIVERSITY
College of Arts and Sciences
Bloomington

Astronomy Department at Indiana University

The Department of Astronomy offers the M.A. and Ph.D. degrees in astronomy as well as a Ph.D degree in astrophysics jointly with the Department of Physics. Students normally spend the first two years taking astronomy and physics graduate courses and then begin dissertation research. The Astronomy Department offers excellent computing resources, a remote observing facility and instrumentation laboratories. IU



is a 17% partner in the WIYN consortium, which operates 3.5-m and 0.9-m telescopes at Kitt Peak.

is a 17% partner in the WIYN consortium, which operates 3.5-m and 0.9-m telescopes at Kitt Peak.



Graduate students observe on telescopes around the world and present their research at local, national, and international conferences.

Indiana University is committed to providing a campus environment where women can excel. Travel and research grants are available through the Office for Women's Affairs.

Teaching is an important part of the graduate experience in astronomy at Indiana University. Graduate students serve as Associate Instructors during the academic year and are encouraged to teach their own courses during the summer.



Catherine Pilachowski (Professor and Daniel Kirkwood Chair in Astronomy, Ph.D. University of Hawaii 1975) explores the evolution of stars and the Milky Way through the study of the compositions of stars.

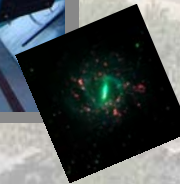
Katherine Rhode (Assistant Professor, Ph. D. Yale University 2003) studies the origin and evolution of galaxies by quantifying the ensemble properties of their globular cluster systems.



Eileen Friel (Professor, Ph.D. University of California, Santa Cruz, 1986) investigates the formation and evolution of the Milky Way galaxy and its stellar populations by using star clusters as chemical and dynamical probes of the Galactic disk.



Liese van Zee (Associate Professor, Ph.D. Cornell University 1996) studies the evolution and star formation history of galaxies, including stellar population models and elemental enrichment.



Phyllis Lugger (Professor, Ph.D. Harvard University 1982) studies the dynamics of globular star clusters and interacting binary stars using the Hubble Space Telescope, Chandra X-ray Observatory, and WIYN telescope.

